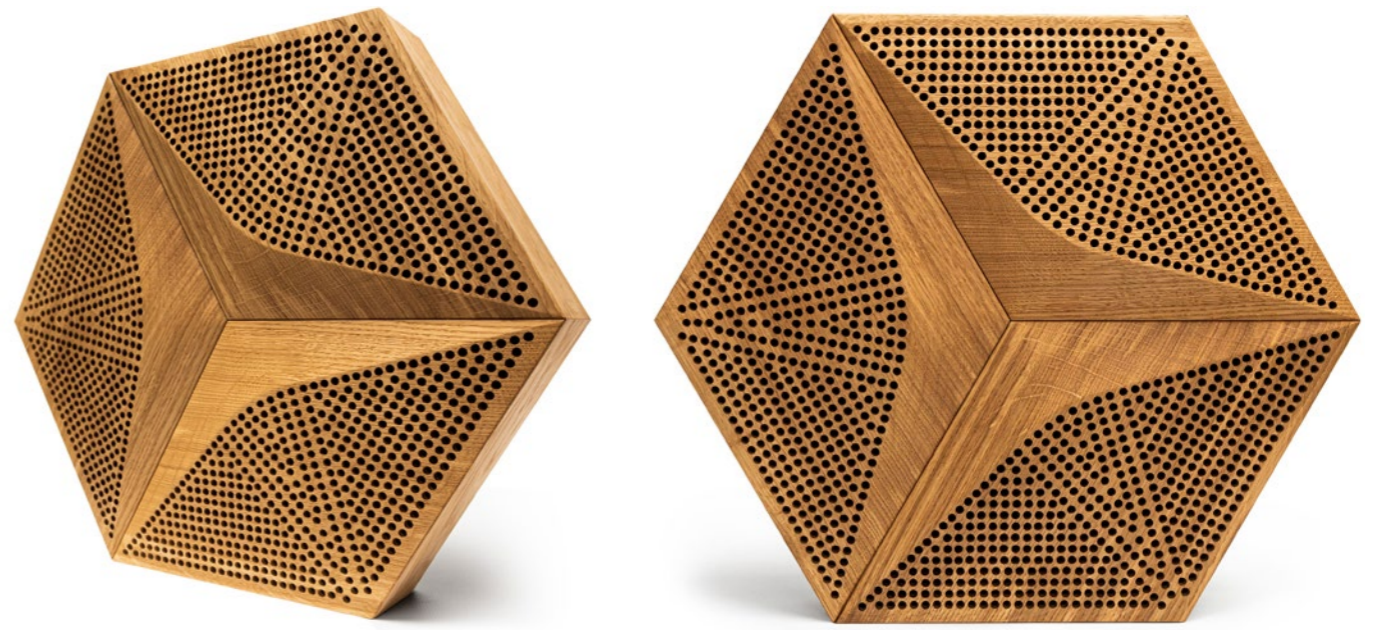


ACOUSTIC CLASS
A HEXAGO
CM - A

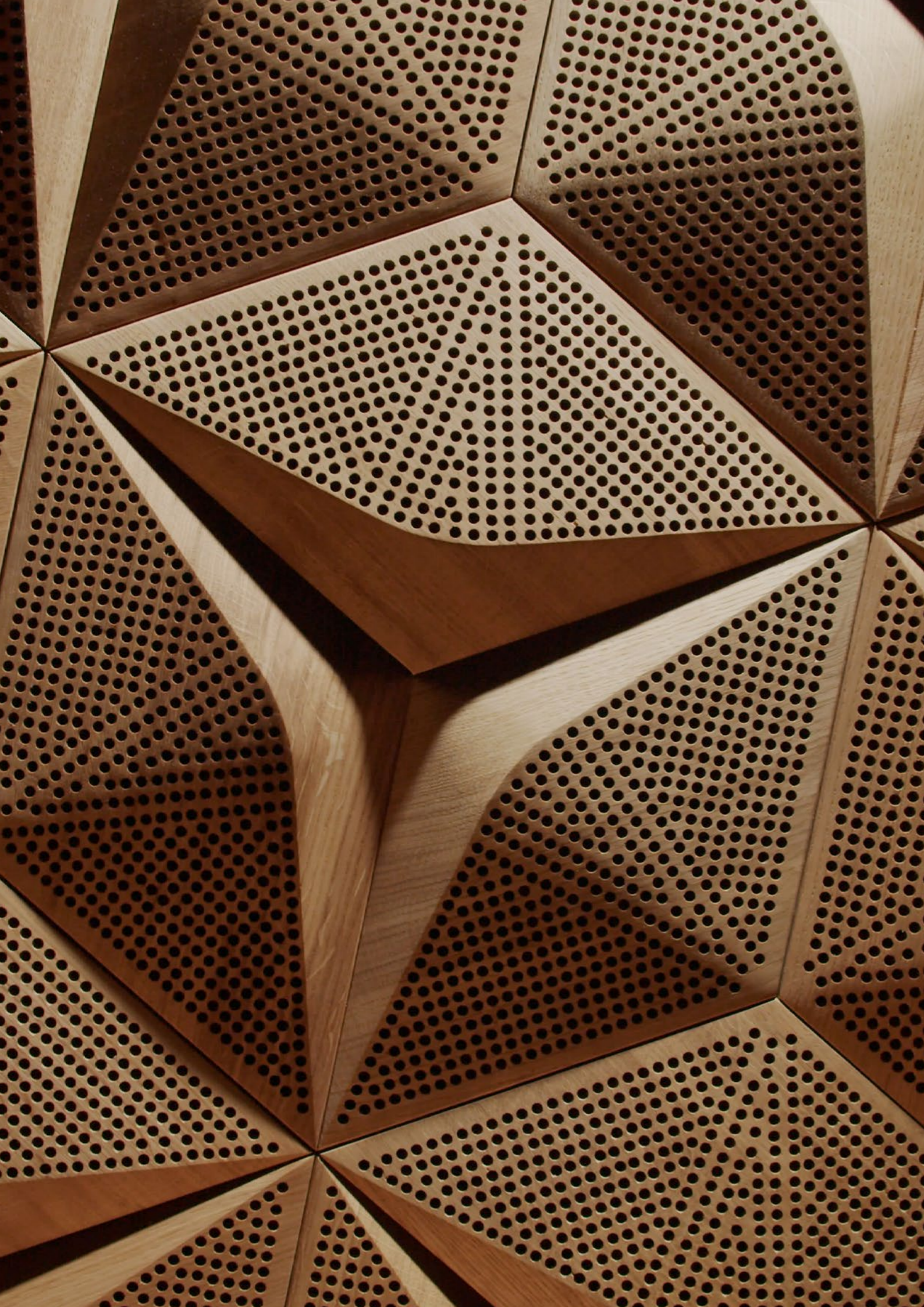
FORM[®]
AT WOOD
designed to
A B S O R B



PRODUCT FEATURES:

- highest sound absorption class A (EN ISO 11654)
- broadband reverberation reduction and speech transmission enhancement in the full frequency range
- suitable for all rooms where acoustics is essential – recording studios, private listening rooms, conference and auditoria rooms, office spaces, hotel lobbies and other public-access spaces
- can be mixed with HEXAGO CM-D as well as the FLAT version and other FORM AT WOOD decorative panels
- quick and easy DIY installation thanks to the integrated hangers and mounting kit

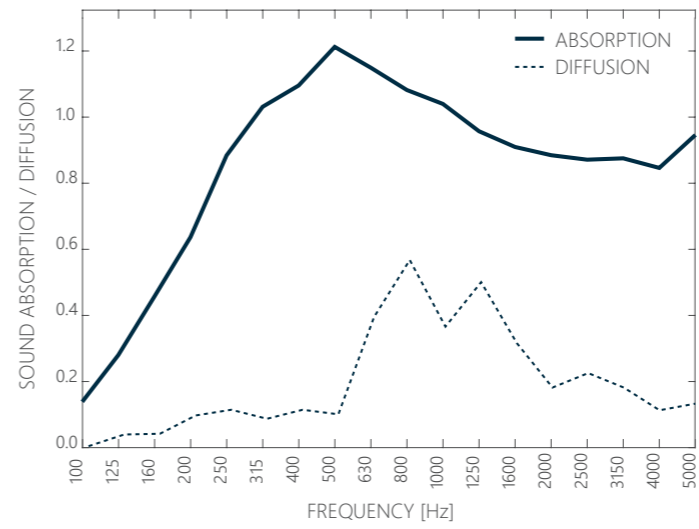
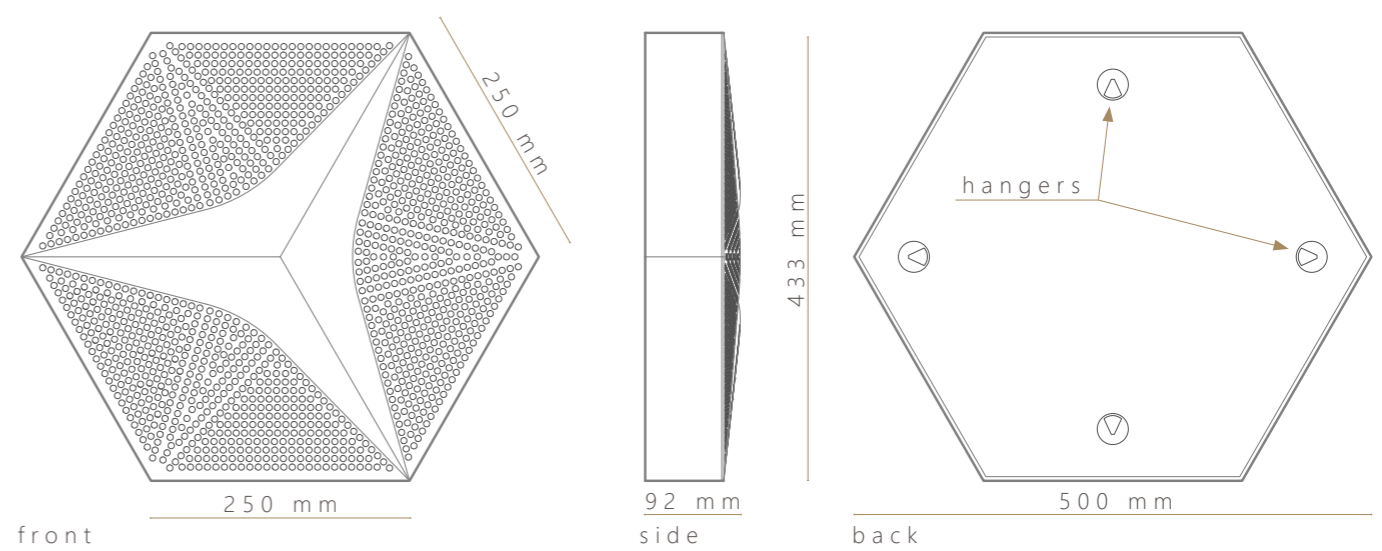




ACOUSTIC CLASS
A HEXAGON
 CM - A

FORM
 AT WOOD

designed to
 ABSORB



ACOUSTIC FEATURES:

- functions: absorption and diffusion
- absorption class: A (acc to ISO 354:2003)
- absorption range: 200-5000 Hz
- $\alpha_w = 0,95$ (acc to ISO 11654:1997)
- NRC = 1,00; SAA = 0,96 (acc to ASTM C423-17)
- diffusion range: 630-4000 Hz (acc to ISO 17497-2)

GENERAL FEATURES:

- materials:
 top - engineered perforated 3D FAW wall panels
 box - veneered wood and wood-based materials
 core - absorbing wool and acoustic membrane
- wood species: oak
- finish: hardwaxoil / varnish
- dimensions: side length 500mm, height 433mm, thickness 92mm
- mounting methods: freely hanging on screws
- application: wall coverings
- weight: 4,1kg/pcs; 26,3 kg/m²

